

By Bus or Train

From JR Hamasama St.
Take the town commuter bus to
Yumura Onsen

From Osaka or Kobe
Take the Zentan Express bus to
Hamasaka, get down at Yumura Onsen

From Yumura Onsen.
Take the town loop line
bus(Teragi), get down at Tando
bus stop

Contact Us

Tajima Pasture Park Office

1033 tando Shinonsen-cho
Mikata-gun Hyogo Pref

TEL 0796-92-2641

FAX 0796-92-2640

E Mail: bokujo@yumenet.tv

HTTP://www.tajimabokujo.jp

Furusato/Makiba no Yado

TEL 0796-92-1005

hppt://www.bokujo.com

4 Seasons of Tajima Pasture Park

Spring



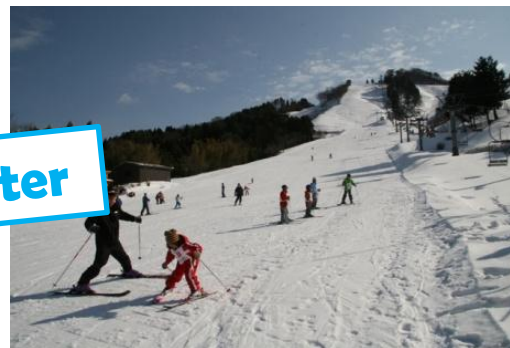
Summer



Autumn



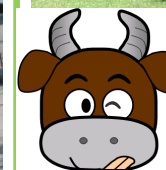
Winter



Nature and Animal contact Park

兵庫県立
但馬牧場公園

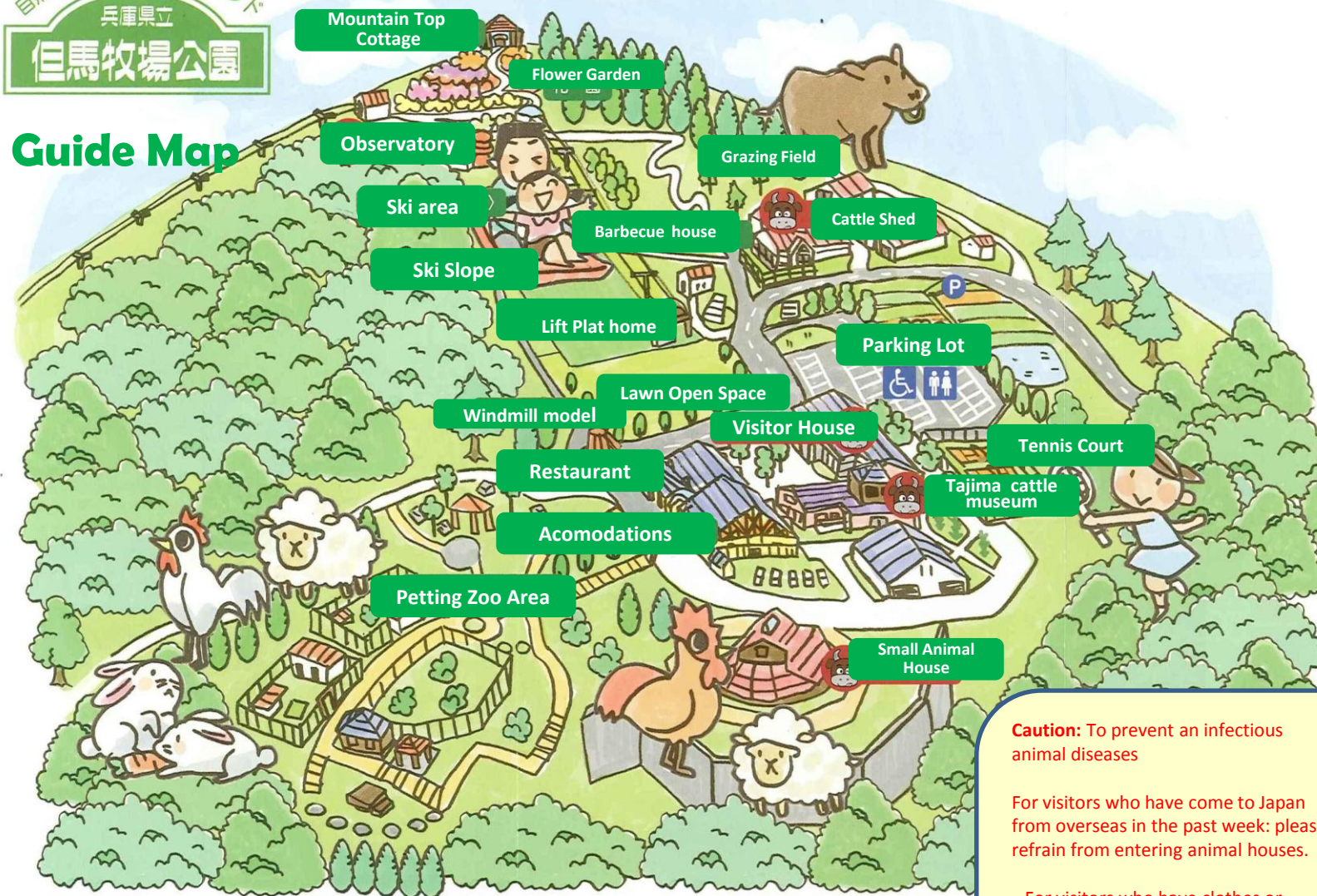
Hyogo Prefectural Tajima Pasture Park



This Park are full of contact of
animal and Nature.
You can play ,eat and experience.
So,you can refresh.



Guide Map



A sheep, goat are in petting zoo area



An experience of making Udon in visitor house



Playing a ground golf on lawn open space



Study about Tajimaushi in Tajimaushi museum

Caution: To prevent an infectious animal diseases

For visitors who have come to Japan from overseas in the past week: please refrain from entering animal houses.

For visitors who have clothes or shoes which have touched animals, their excreta, or pasture soils, etc: please do not bring such clothes or shoes onto our premises.

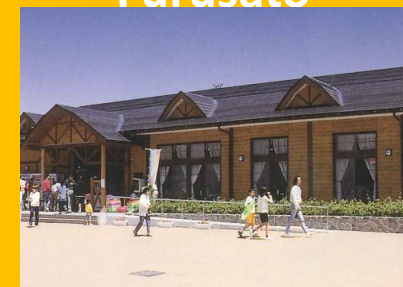
For visitors entering the cattle shed, small animal house and the petting zoo area: please sterilize your hands and shoe soles.

Accommodations Makiba no Yado



Enjoy the grand nature and taste of Tajima

Furusato



Various dishes using the Tajima beef

